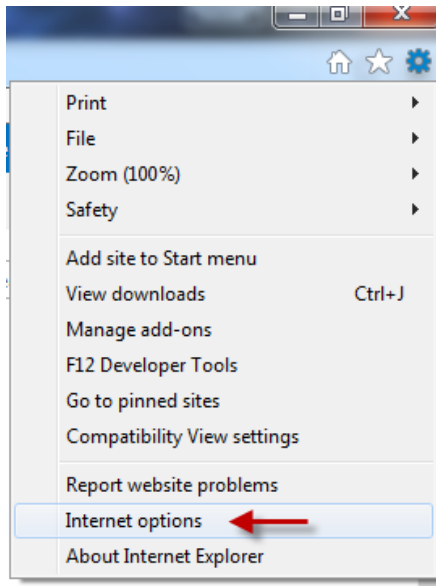




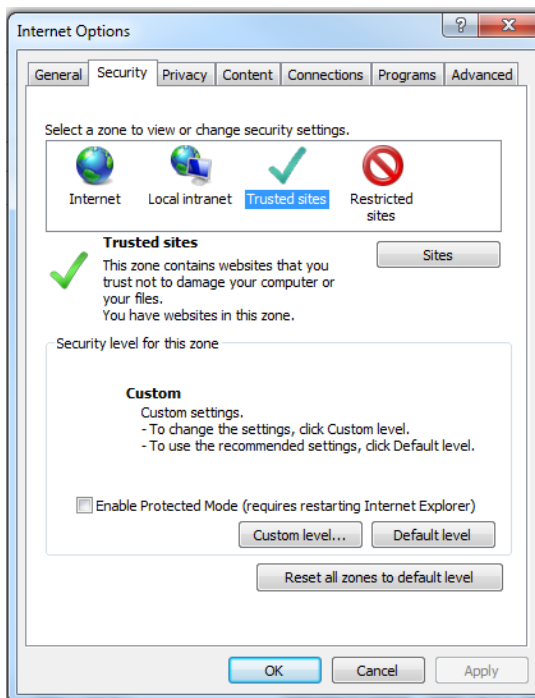
How to add I-SMART as a trusted website in IE

-Open IE11 Browser

Navigate to your 'Internet Options' using the Settings cog in your browser



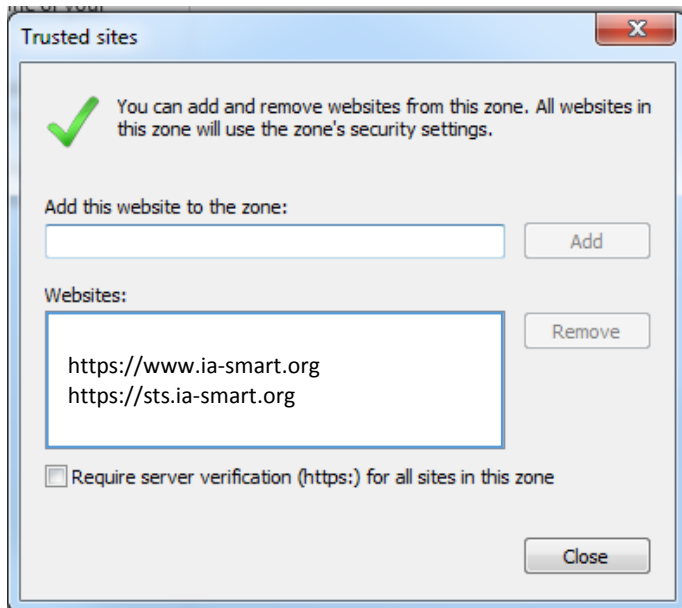
-In your Internet Options, navigate to the Security Tab and locate 'Trusted Sites' by clicking 'Sites'





How to add I-SMART as a trusted website in IE

-Here, add <https://www.ia-smart.org> and <https://sts.ia-smart.org> .



-Close the window

Your browser is now set up properly