



# Iowa Influenza Surveillance Network (IISN)

## Influenza-like Illness (ILI) and Other Respiratory Viruses

### Weekly Activity Report

#### For the week ending September 19 2020 - Week 38

All data presented in this report are provisional and may change as additional reports are received



State Hygienic Laboratory

### Iowa Influenza Geographic Spread

No Activity	<b>Sporadic</b>	Local	Regional	Widespread
-------------	-----------------	-------	----------	------------

Note: See CDC activity estimates for definition [www.cdc.gov/flu/weekly/overview.htm](http://www.cdc.gov/flu/weekly/overview.htm)

**Due to the ongoing community transmission of COVID-19 in Iowa, IDPH will continue to publish weekly influenza reports during the summer.**

Quick Stats	
Predominate influenza subtype	None identified
Percent of influenza rapid test positive	0% (0/617)
Percent of RSV rapid tests positive	0% (0/77)
Percent of outpatient visits for ILI	2.01% (baseline 1.7%)
Number of long-term care outbreaks	0
Influenza-associated mortality - all ages (Cumulative)	103
Influenza-associated pediatric mortality (Cumulative)	2
Predominate non-influenza virus	Rhinovirus/enterovirus

Note: Deaths are considered influenza-associated when influenza is listed on the death certificate. This is an underestimate of influenza-related deaths. Cumulative mortality totals are from 9/29/2019 to the current week.

#### **Iowa statewide activity summary:**

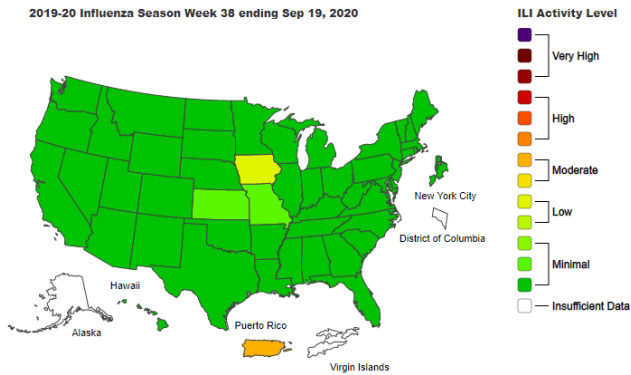
Reported influenza activity continues to be at a low level and the geographic spread of influenza is at the “sporadic” level for this reporting week. The State Hygienic Laboratory identified one influenza A positive specimen, which has not been subtyped, from specimens submitted. No positive influenza results have been reported from clinical labs responding to Iowa’s respiratory virus testing survey. The proportion of outpatient visits due to influenza-like illness (ILI) was 2.01%, which is above the regional baseline of 1.7%. However, the sites and/or counties reporting high ILI are also reporting a high amount of COVID-19. No long-term care influenza outbreaks and no influenza-associated deaths were reported. Of the 614 non-influenza respiratory testing results reported from the labs completing the Iowa respiratory virus testing survey, rhinovirus/enterovirus was detected most frequently with 125 positive results or 20% positive. One school districts reported 10% illness during this reporting week.

#### **International activity summary - (WHO):**

Globally, influenza activity was reported at lower levels than expected for this time of the year. In the temperate zone of the northern hemisphere, influenza activity remained below inter-seasonal levels while in the temperate zones of the southern hemisphere, the influenza season has not started. Worldwide, of the very low numbers of detections reported, seasonal influenza A viruses accounted for the majority of detections.

Visit [www.who.int/influenza/surveillance\\_monitoring/updates/latest\\_update\\_GIP\\_surveillance/en/](http://www.who.int/influenza/surveillance_monitoring/updates/latest_update_GIP_surveillance/en/) for more information. It was last updated 9/14/2020.

**National activity summary - (CDC)-Last Updated in Week 38:**

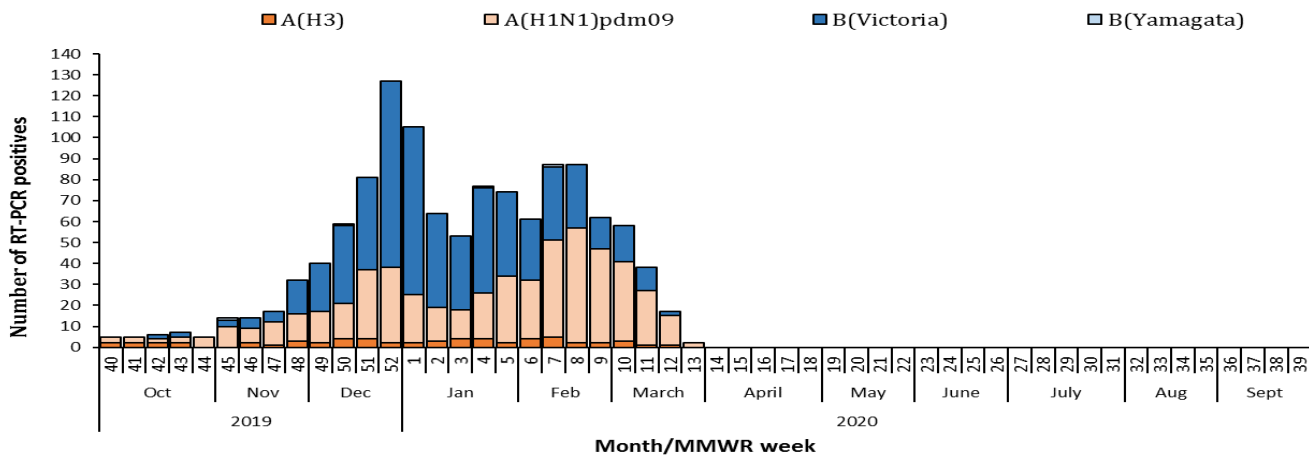


Detailed information can be found online at [www.cdc.gov/flu/weekly/](http://www.cdc.gov/flu/weekly/).

**Laboratory surveillance program:**

The State Hygienic Laboratory (SHL) is the primary laboratory in Iowa characterizing specimens for influenza surveillance. SHL reports the number of tests performed and the type and subtype/lineage of positive tests to the influenza surveillance network daily. SHL also sends a portion of specimens to CDC for further characterization.

**Influenza viruses detected by SHL by week**



**Cumulative Influenza viruses detected by SHL by age group (9/29/19 – Current Week)**

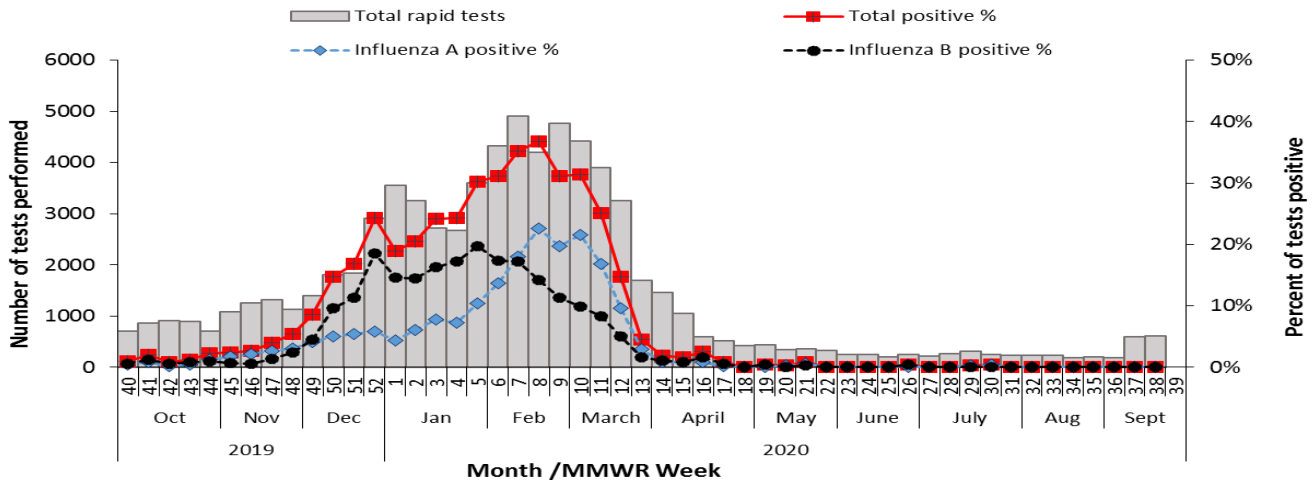
Age Group	Influenza A				Influenza B				Total	Percent
	A(H1N1) pdm09	A(H3)	Not Subtyped	Total A	Victoria Lineage	Yamagata Lineage	Not subtyped	Total B		
0-4	54	7	0	61	91	0	2	93	154	13%
5-17	72	6	2	80	200	2	2	204	284	23%
18-24	43	9	2	54	166	0	3	169	223	18%
25-49	104	7	3	114	102	0	1	103	217	18%
50-64	97	7	4	108	34	0	0	34	142	12%
>64	149	23	7	179	22	2	3	27	206	17%
<b>Total</b>	<b>519</b>	<b>59</b>	<b>17</b>	<b>596</b>	<b>615</b>	<b>4</b>	<b>11</b>	<b>630</b>	<b>1226</b>	
<b>Percent</b>	<b>87%</b>	<b>10%</b>	<b>3%</b>		<b>98%</b>	<b>1%</b>	<b>2%</b>			

Totals by age may not add up to totals by subtype/lineage due to missing age information. Only cases of Iowa residents are included. Specimens listed as “not subtyped” may be pending or were not able to be subtyped due to weak positive lab results. This can be due to poor collection, timing of collection or stage of infection.

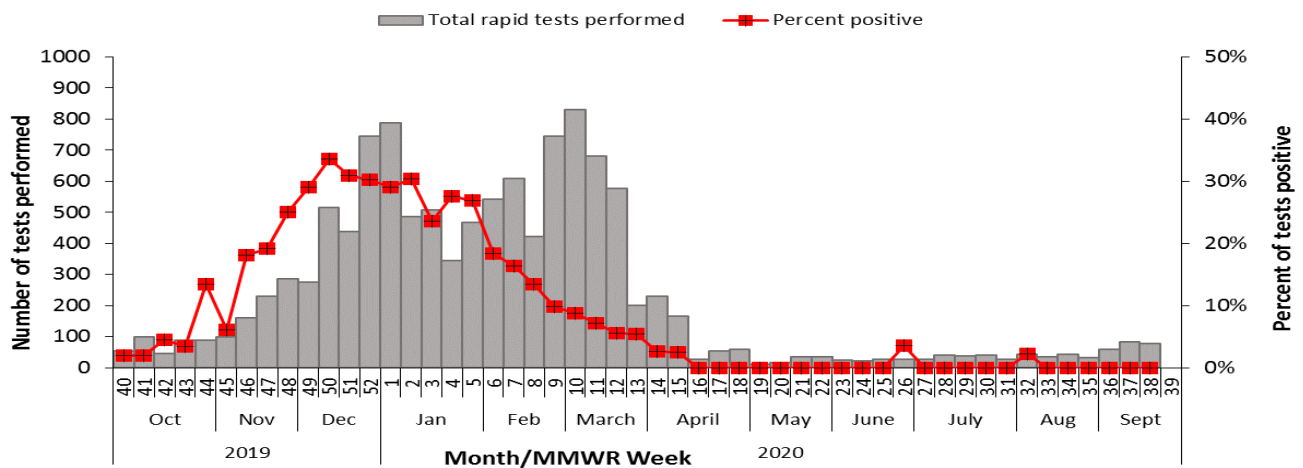
**Rapid influenza and RSV test surveillance:**

The State Hygienic Laboratory (SHL) runs a weekly web-based survey program where laboratorians report the number of influenza and respiratory syncytial virus (RSV) rapid tests performed and the number of tests positive. This table includes only the number of patients tested for influenza or RSV at laboratory surveillance sites throughout the state. This table does not provide case counts.

**Percent of influenza rapid tests positive and number of tests performed, 2019-2020**



**Percent of RSV rapid tests positive and number of tests performed, 2019-2020**



**Percent of influenza rapid tests positive and number of tests performed by region for the present week**

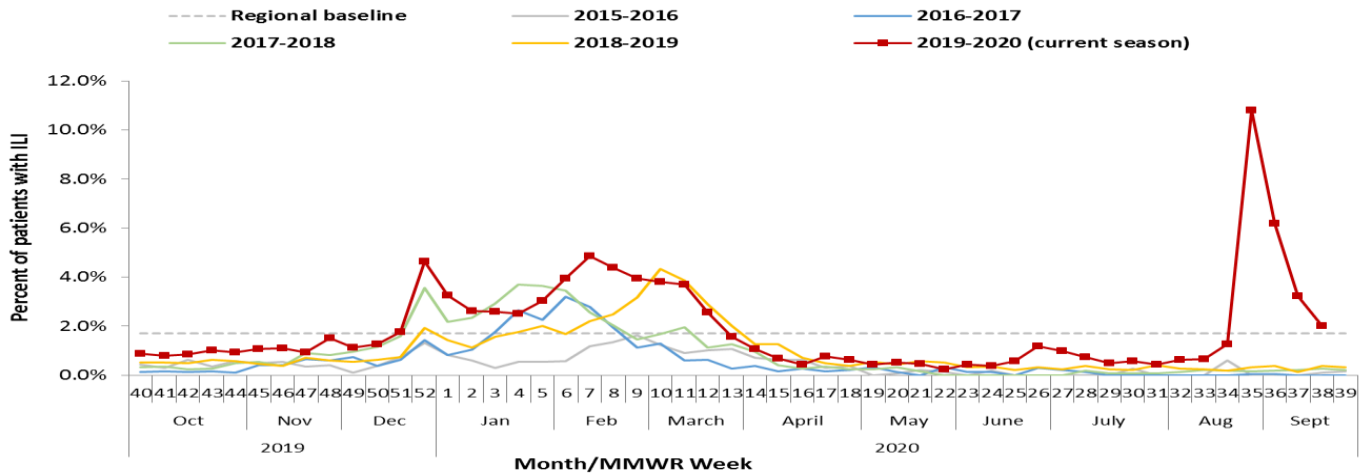
REGION	RAPID INFLUENZA TESTS				RAPID RSV TESTS		
	Tested	Flu A	Flu B	% Positive	Tested	Positive	% Positive
Region 1 (Central)	106	0	0	0	0	0	0
Region 2 (NE)	4	0	0	0	0	0	0
Region 3 (NW)	82	0	0	0	62	0	0
Region 4 (SW)	8	0	0	0	0	0	0
Region 5 (SE)	11	0	0	0	3	0	0
Region 6 (Eastern)	406	0	0	0	12	0	0
<b>Total</b>	<b>617</b>	<b>0</b>	<b>0</b>	<b>0</b>	<b>77</b>	<b>0</b>	<b>0</b>

Note: see map near the end of the report for the counties in each region.

**Outpatient health care provider surveillance program (ILINet):**

Outpatient health care providers who participate in the ILINet (a national influenza surveillance program) report the number of patients seen with influenza-like illness and the total number of patient visits each week. This system is a key part of Iowa’s influenza surveillance. Iowa health care providers interested in joining this surveillance program should contact Andy Weigel at 515-322-1937 or [andy.weigel@idph.iowa.gov](mailto:andy.weigel@idph.iowa.gov) for more information.

**Percent of outpatient visits attributed to ILI as reported by ILINet sites**



**Outpatient visits for influenza-like illness (ILI)**

Week, End Date	Age 0-4	Age 5-24	Age 25-49	Age 50-64	Age >64	Total ILI	%ILI
Week 36, September 5	2	293	12	0	1	308	6.18
Week 37, September 12	2	97	14	2	1	116	3.24
Week 38, September 19	5	68	15	3	1	92	2.01

Note: Influenza-like Illness is defined as a fever of  $\geq 100^{\circ}$  F as well as cough and/or sore throat.

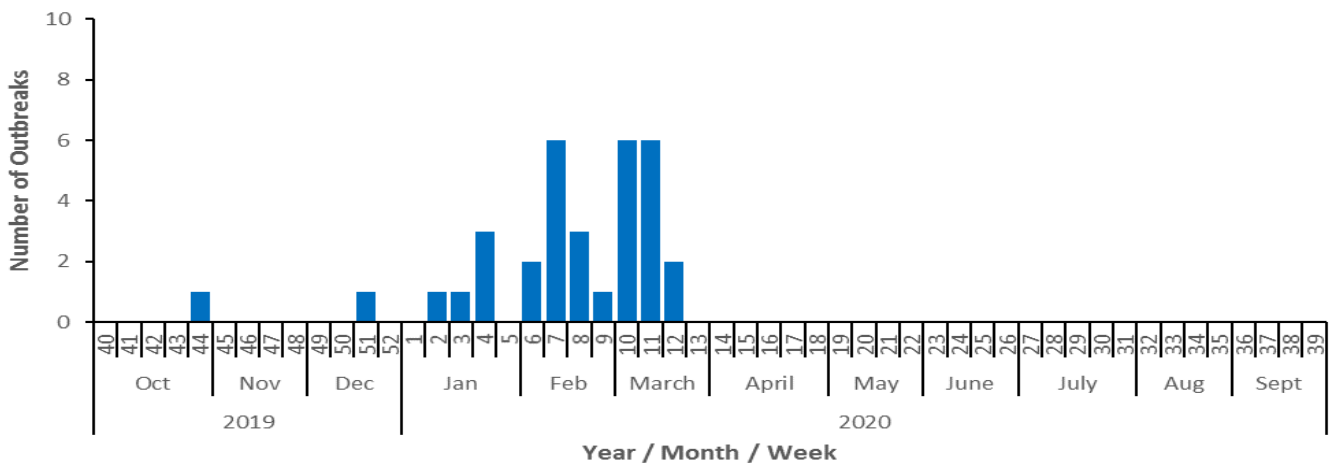
**Long-term Care Outbreaks:**

**Number of long-term care outbreaks investigated**

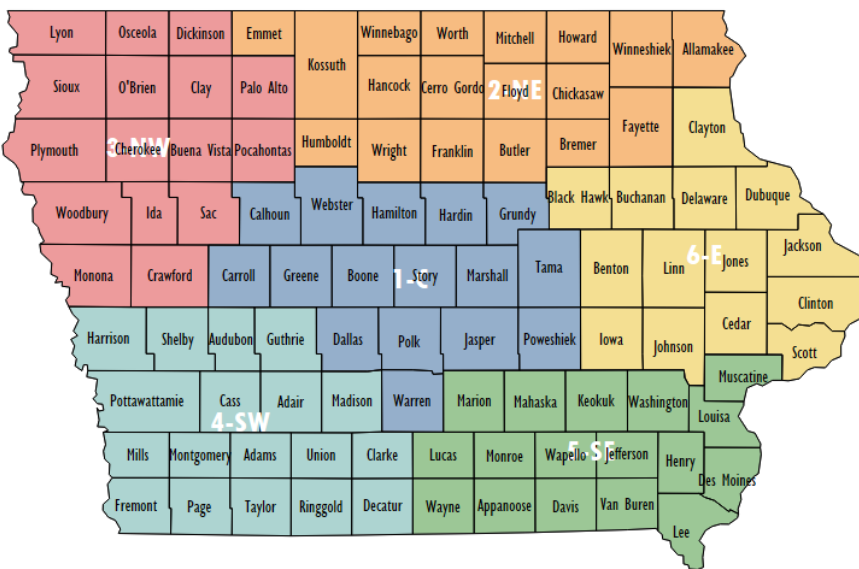
REGION	CURRENT WEEK	CUMULATIVE (9/29/19– CURRENT WEEK)
Region 1 (Central)	0	15
Region 2 (NE)	0	4
Region 3 (NW)	0	1
Region 4 (SW)	0	3
Region 5 (SE)	0	3
Region 6 (Eastern)	0	7
<b>Total</b>	<b>0</b>	<b>33</b>

Note: see map after this section for the counties in each region.

**Number of long-term care facility influenza outbreaks investigated by week, 2019-2020**



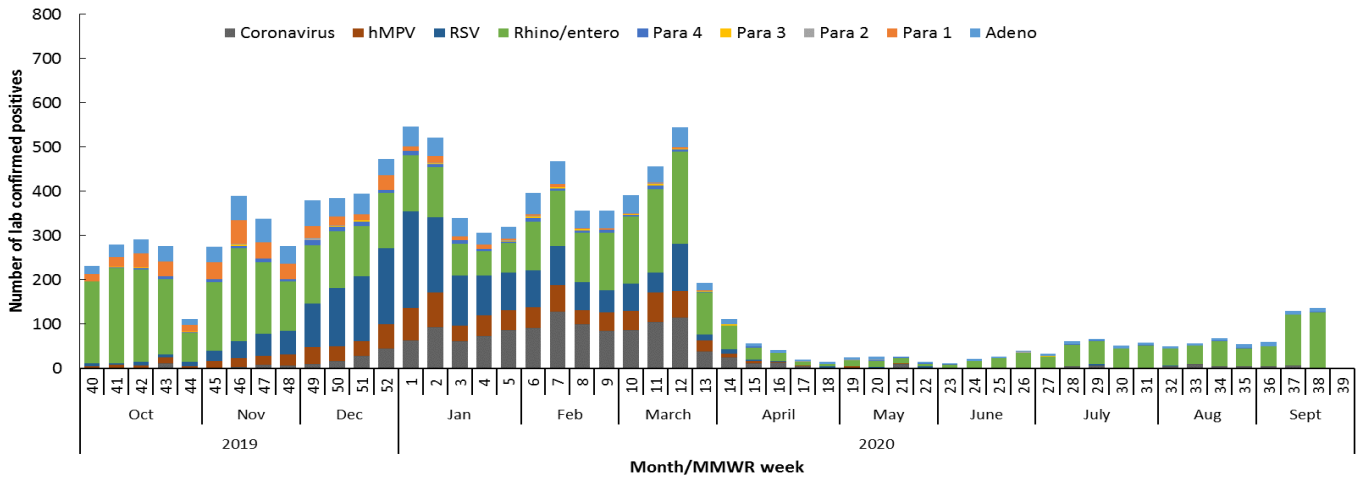
**Influenza Region Map**



**Non-influenza respiratory viruses:**

The State Hygienic Laboratory (SHL) runs a weekly web-based survey program where laboratorians report the number of positive tests for non-influenza respiratory viruses. This table also includes the positive non-influenza virus tests reported from the Dunes Medical Laboratories at Mercy Medical Center in Sioux City. The table includes only the number of positive tests at laboratory surveillance sites throughout the state. The table does not provide case counts.

**Comparison of respiratory illnesses by type**



**Number of positive results for non-influenza respiratory virus reported by clinical laboratories**

Viruses	CURRENT WEEK	CUMULATIVE (9/29/19–CURRENT WEEK)
Adenovirus	9	1135
Parainfluenza Virus Type 1	0	446
Parainfluenza Virus Type 2	0	22
Parainfluenza Virus Type 3	0	38
Parainfluenza Virus Type 4	2	171
Rhinovirus/Enterovirus	125	4449
Respiratory syncytial virus (RSV)	0	1957
Human metapneumovirus (hMPV)	0	953
Coronavirus*	1	1382

\* The coronaviruses mentioned in this report are common and NOT the novel coronavirus that causes COVID-19.

**Other resources:**

**Vaccine:**

Influenza vaccine recommendation: [idph.iowa.gov/immtb/immunization/influenza/recommendations](http://idph.iowa.gov/immtb/immunization/influenza/recommendations)

CDC vaccine information: [www.cdc.gov/flu/prevent/keyfacts.htm](http://www.cdc.gov/flu/prevent/keyfacts.htm)

Vaccine finder: <http://vaccinefinder.org/>

**Neighboring states' influenza information:**

Illinois: [dph.illinois.gov/topics-services/diseases-and-conditions/influenza/influenza-surveillance](http://dph.illinois.gov/topics-services/diseases-and-conditions/influenza/influenza-surveillance)

Minnesota: [www.health.state.mn.us/diseases/flu/stats/index.html](http://www.health.state.mn.us/diseases/flu/stats/index.html)

Missouri: [health.mo.gov/living/healthcondiseases/communicable/influenza/reports.php](http://health.mo.gov/living/healthcondiseases/communicable/influenza/reports.php)

Nebraska: <http://dhhs.ne.gov/Pages/Flu-Activity.aspx>

South Dakota: [doh.sd.gov/diseases/infectious/flu/](http://doh.sd.gov/diseases/infectious/flu/)

Wisconsin: [dhs.wisconsin.gov/influenza/index.htm](http://dhs.wisconsin.gov/influenza/index.htm)