

# HIV CARE CONTINUUM

## Living with HIV

Estimated total number of Iowans living with HIV.



## HIV Diagnoses

Iowans diagnosed with HIV.



## Linked to Care in 1 month

Diagnosed people who attended a medical appointment within a month of diagnoses.



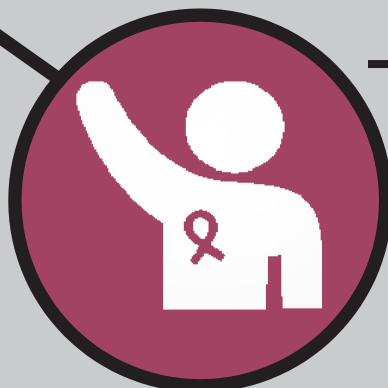
## Retained in care

Diagnosed people who are engaged in medical care.

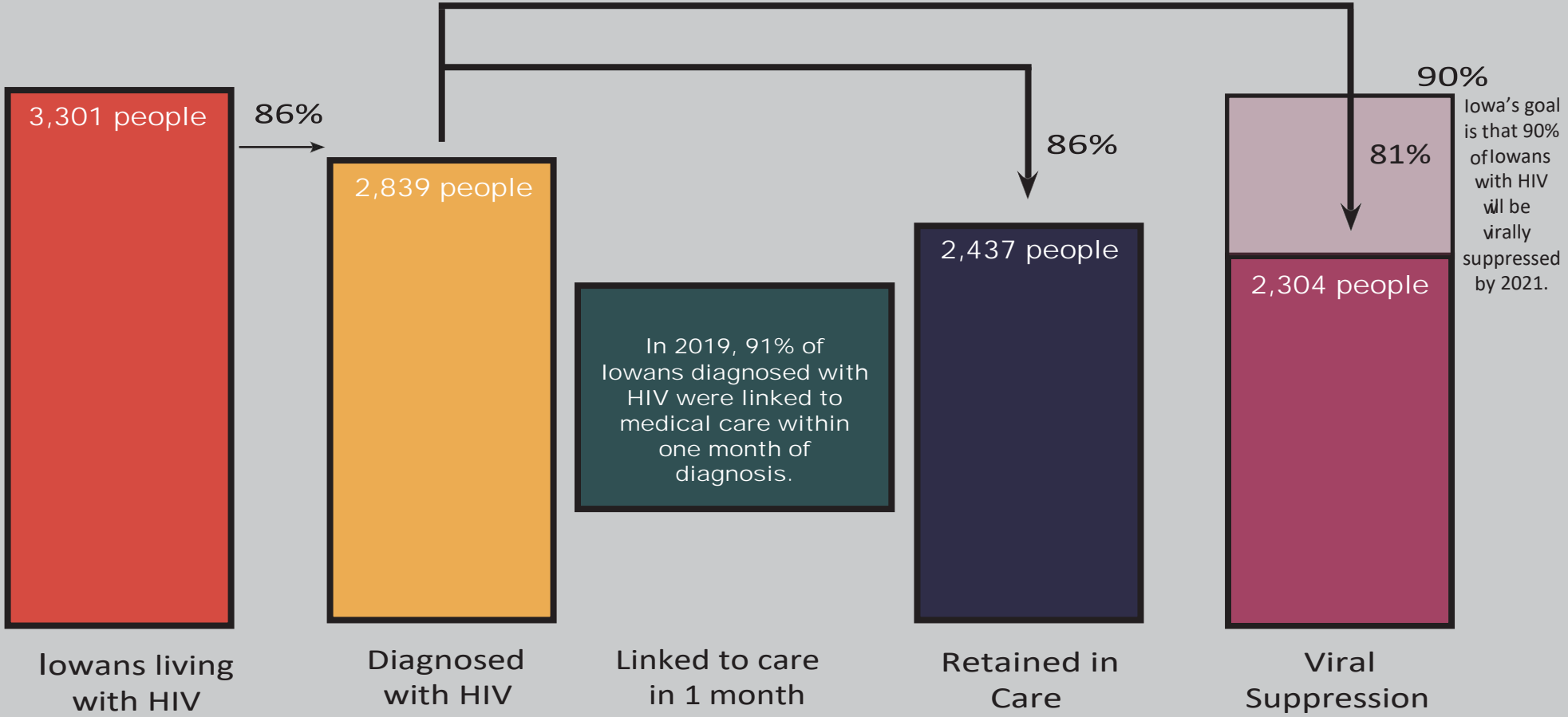


## Viral Suppression

People whose most recent viral load was less than 200 copies/mL.



# 2019 HIV Care Continuum



In 2019, 91% of Iowans diagnosed with HIV were linked to medical care within one month of diagnosis.

Iowa's goal is that 90% of Iowans with HIV will be virally suppressed by 2021.

**Iowans living with HIV**

This bar represents all Iowans living with HIV. It is estimated (based on statistical modelling) that 14% of Iowans with HIV are undiagnosed.

**Diagnosed with HIV**

This bar represents the number and percent of Iowans with HIV who have been diagnosed.

**Linked to care in 1 month**

This box represents the percentage of Iowans diagnosed with HIV in 2018 who attended an HIV medical appointment within one month after diagnosis.

**Retained in Care**

This bar represents the number and percent of Iowans diagnosed with HIV who were engaged in medical care.

**Viral Suppression**

This bar represents the number and percent of Iowans diagnosed with HIV who achieved viral suppression, meaning that the level of HIV in the blood was extremely small, making transmission nearly impossible.

## Undetectable = Untransmittable

"People who take Antiretroviral Therapy (ART) daily as prescribed and achieve and maintain an undetectable viral load have effectively no risk of sexually transmitting the virus to an HIV-negative partner." -Centers for Disease Control and Prevention, 2017