

HIV CARE CONTINUUM

Living with HIV

Estimated total number of Iowans living with HIV.



HIV Diagnoses

Iowans diagnosed with HIV.



Linked to Care in 1 month

Diagnosed people who attended a medical appointment within a month of diagnoses.



Retained in care

Diagnosed people who are engaged in medical care.

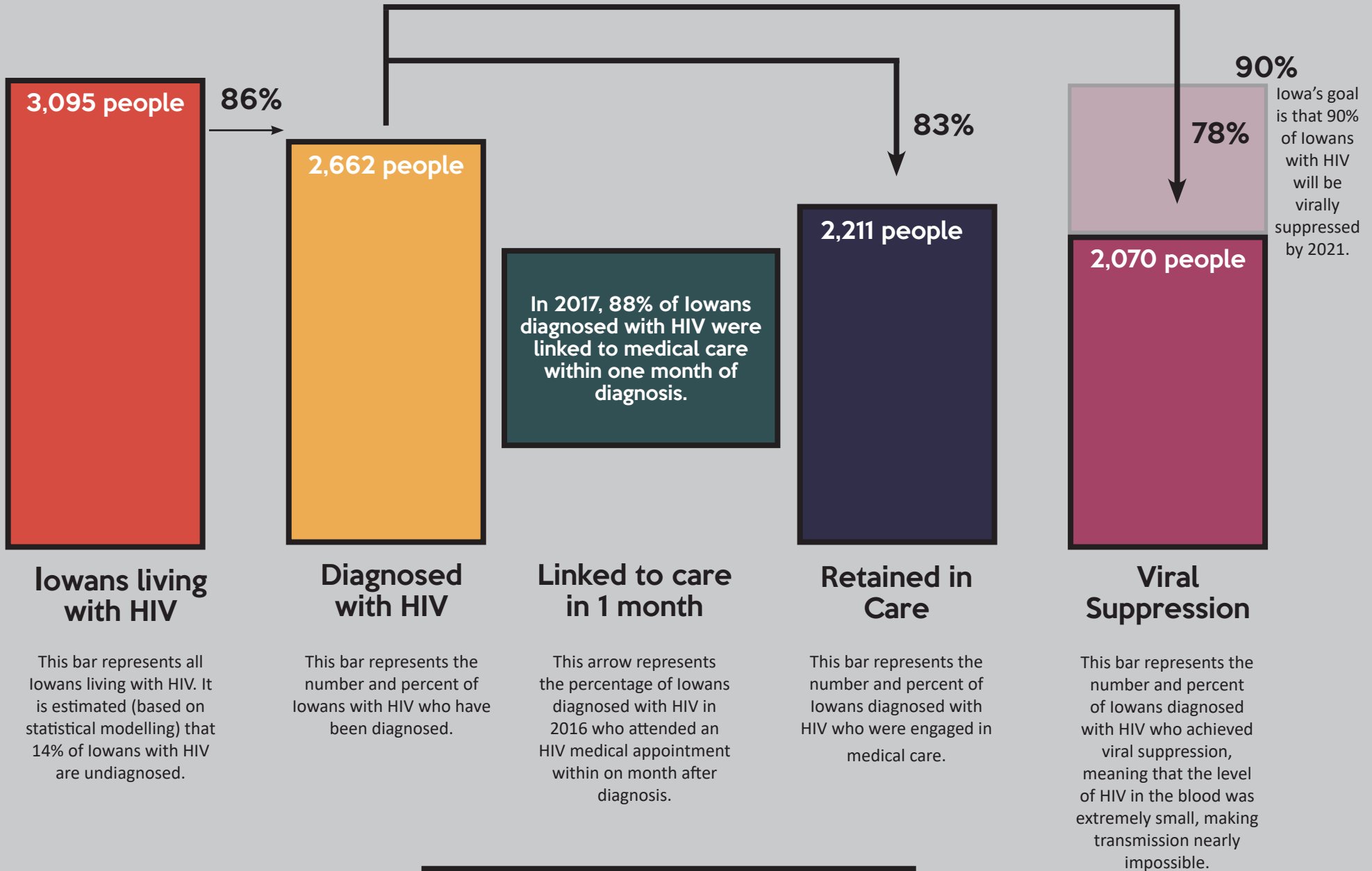


Viral Suppression

People whose most recent viral load was less than 200 copies/mL.



2017 HIV Care Continuum



Undetectable = Untransmittable

"People who take ART daily as prescribed and achieve and maintain an undetectable viral load have effectively no risk of sexually transmitting the virus to an HIV-negative partner." -Centers for Disease Control and Prevention, 2017

