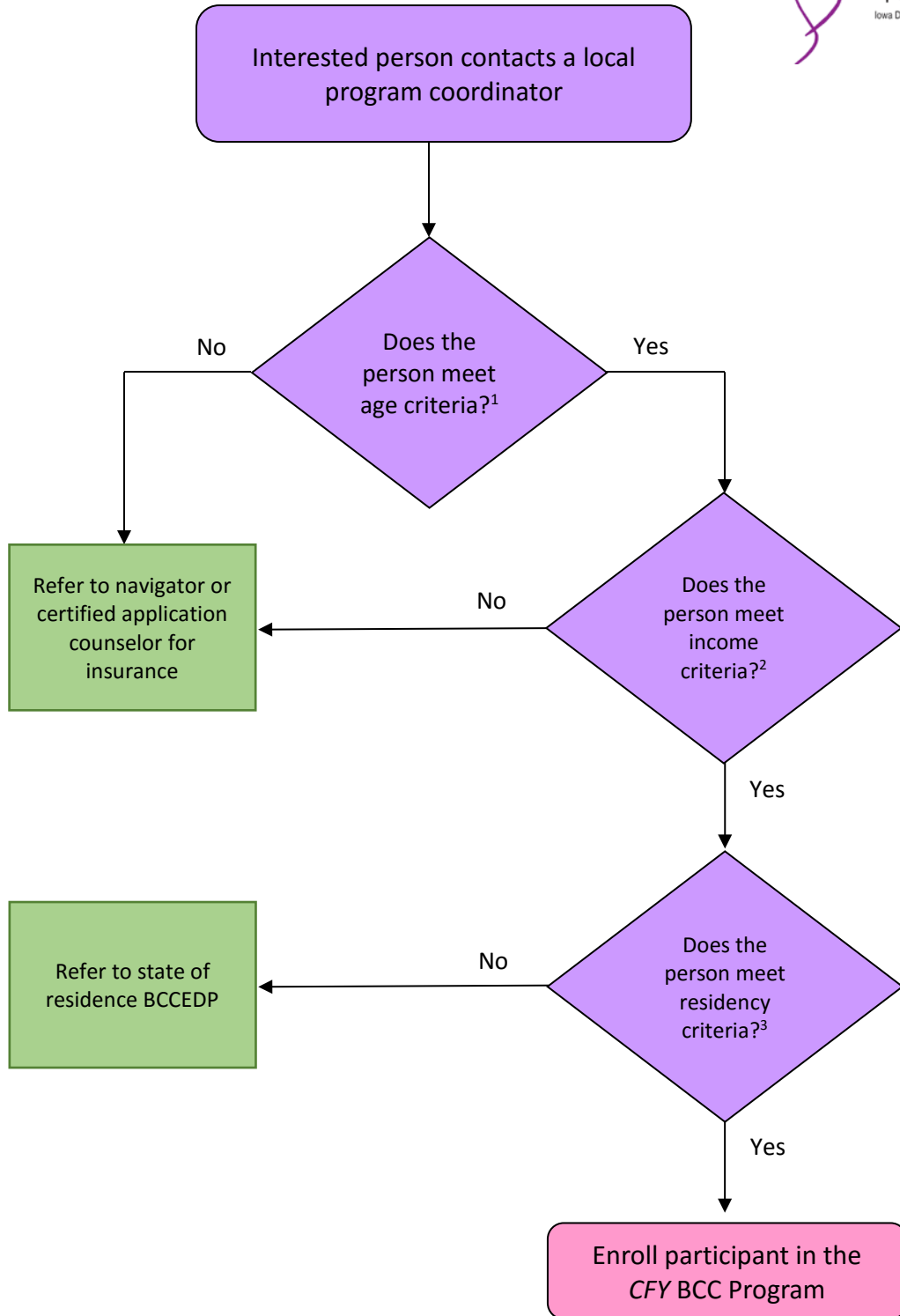


Care for Yourself Breast & Cervical Cancer Program



Enrollment Process



1. Age 40 or over OR under age 40 with symptoms of breast cancer.
2. Net household income must be less than 250 percent of the Federal Poverty Level. Proof of income is not required. Assets do not affect income status.
3. Iowa residency is not required, but the woman must reside in a state that accepts women into BCCT if screened or diagnosed with NBCCEDP funds.