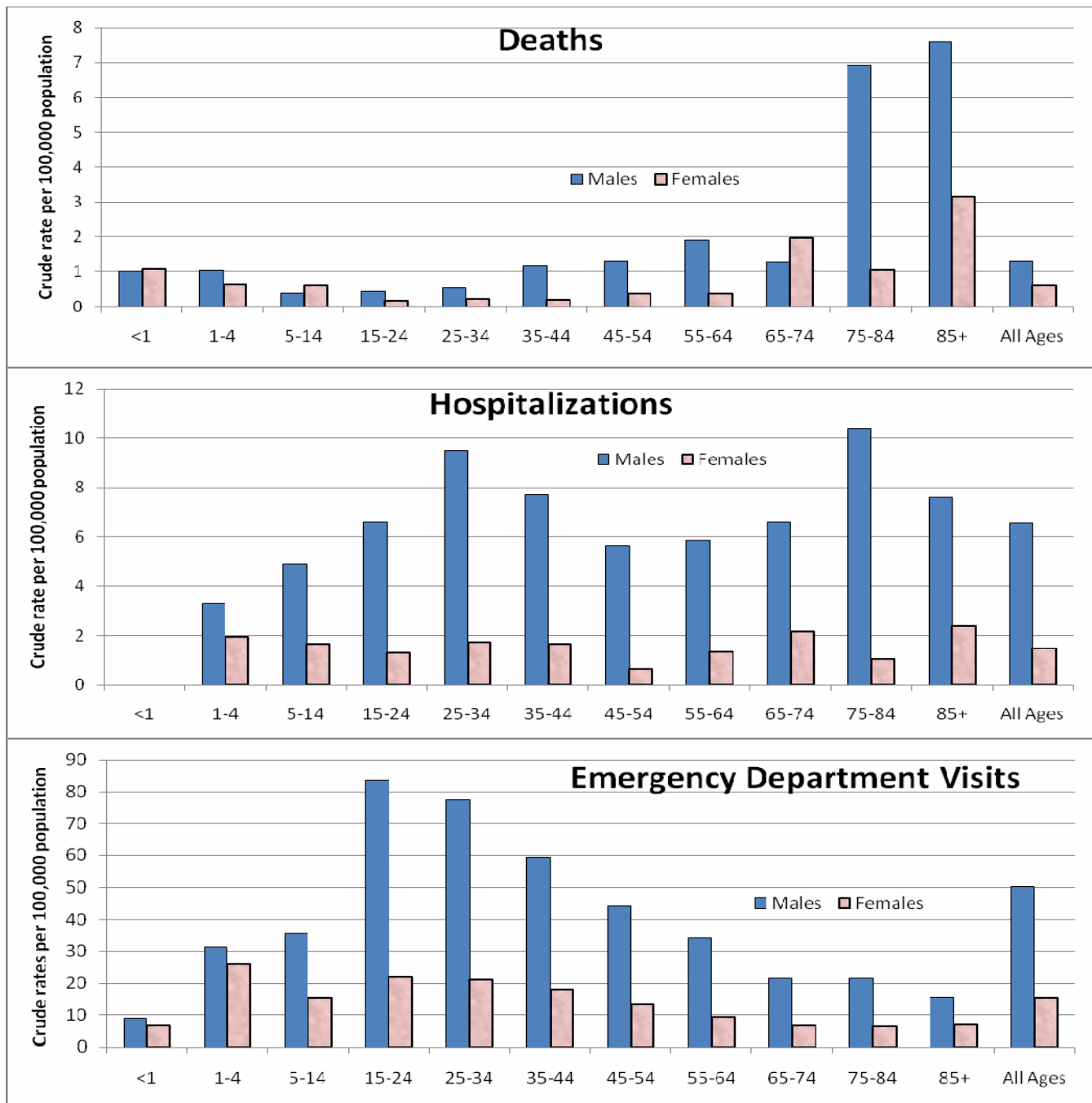


Indicators for unintentional fire-related injuries, Iowa, 2002-2006

Although the rate of fire-related deaths in Iowa (0.9/100,000) is slightly lower than the national NCIPC states' 2004 average (1.1/100,000), fire injuries are still a major concern in Iowa, particularly in certain age groups. Fires can be particularly deadly for the elderly in Iowa, with males over the age of 74 having by far the highest death rates (75-84: 6.9/100,000; 85+: 7.6/100,000).



- Each year in Iowa, on average, there are 29 fire-related deaths, 119 hospitalizations and 922 ED visits.
- Fire-related deaths are twice as likely to occur in men (1.3/100,000) as in women (0.6/100,000), but these ratios vary with age.
 - Males over age 74 are the most likely group to die from fire-related injuries (ages 75-84, rate of 6.9/100,000; ages 85+, rate of 7.6/100,000). Among females, the 85+ age group is the most likely to die from fire-related injuries (3.2/100,000).
 - There were, however, less than five deaths in every age/gender group, which makes interpretation of any rate calculation difficult.
- Fires are particularly deadly for the elderly, as their ability to escape from a fire is often limited by mobility. In fact, the fire-related death rates for both men and women, in both the 75-84 and 85+ age categories is nearly equal to fire-related hospitalization rate for that same gender/age category.
 - The difference between death and hospitalization rates is the highest for males in the 25- to 34-year-old category (17 hospitalizations for every death) and for females, in the 35- to 44-year-old category (7.5 hospitalizations for every death).
- Fire-related hospitalizations are, on average, four times greater in males (6.5/100,000) than in females (1.5/100,000) and vary with age.
 - The difference between genders is greatest in the 75-84 (males: 10.4/100,000, females: 1.1/100,000) and the 25-34 age groups (males: 9.5/100,000, females: 1.7/100,000). Males aged 75-84 have the highest fire-related hospitalization rate overall, and those 25-34 have the second highest rate.
- Rates of fire-related ED visits were three times higher in all males (47/100,000) than in all females (15/100,000).
 - Rates of fire-related ED visits peaked in men aged 15-24 (78.6/100,000) and gradually decreased with age. Girls aged 1-4 had the highest rate of fire-related ED visits (25.4/100,000), with females aged 15-24 having the second highest rate (21.4/100,000), followed by a gradual decline in subsequent age groups.
 - The gender difference in rates of fire-related ED visits is largest in the 55- to 64-year-old age group where males (32/100,000) are four times more likely than females (8/100,000) to have a fire-related ED visit.