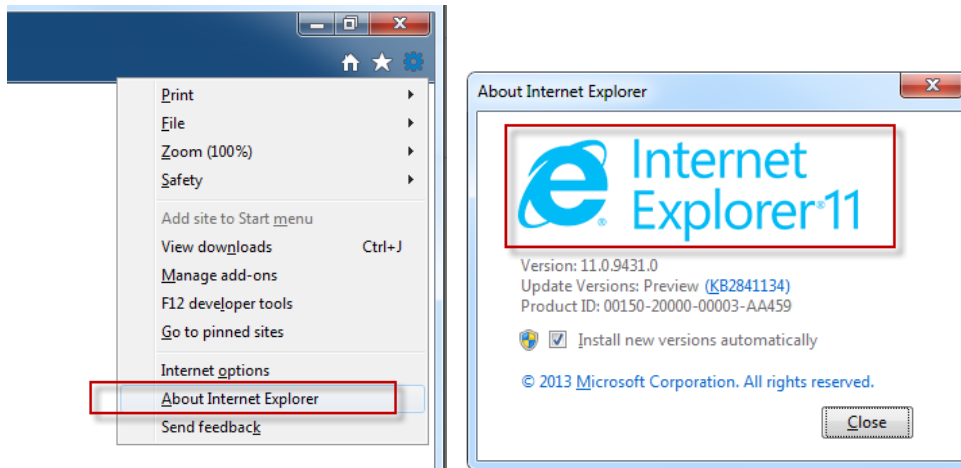
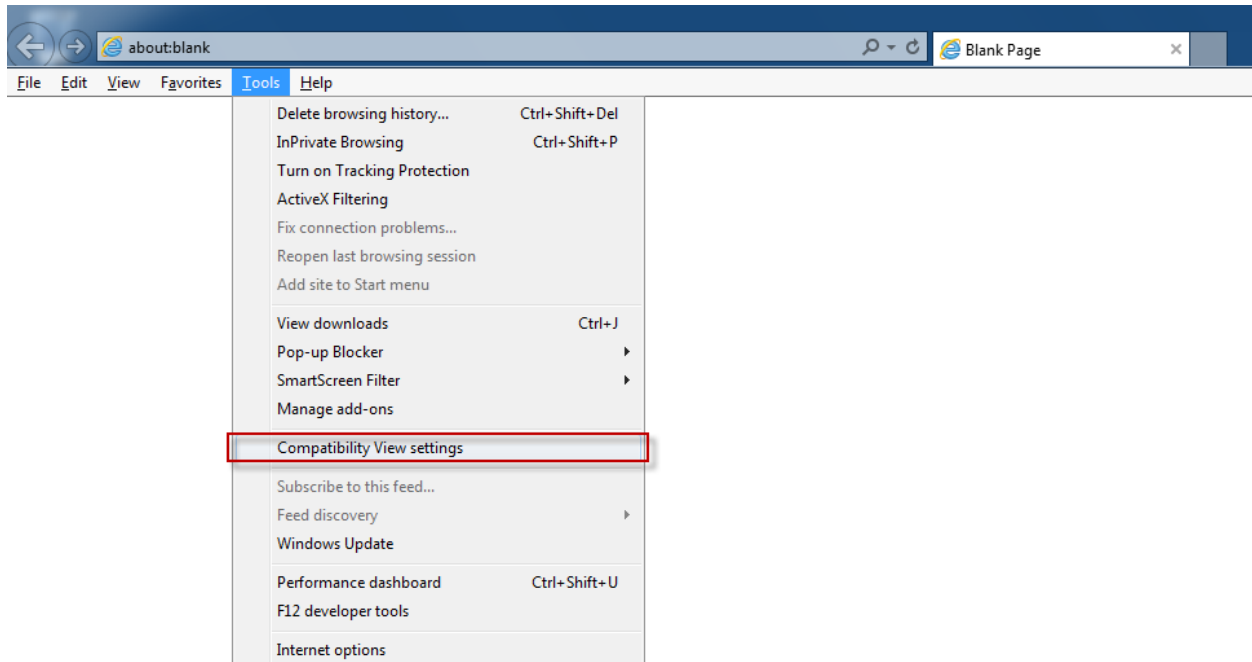


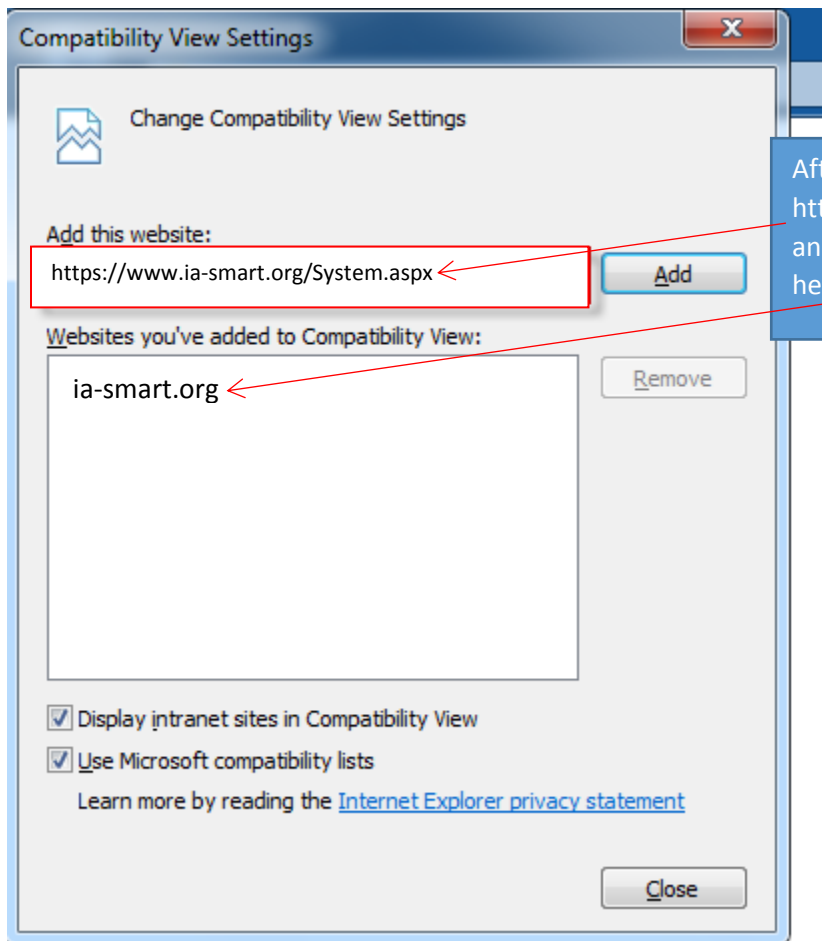
If you are using Internet Explorer to view I-SMART, you will probably need to set compatibility mode before I-SMART will function correctly. Access the menu pictured below to determine if you are using Internet Explorer 11.



In Internet Explorer version 11, press the 'Alt' key on the keyboard or Right click on the blue background of the IE header and the following menu will appear:



Click on Compatibility View settings, in the window that appears enter the I-SMART address in the 'Add this website:' box and click 'Add.'



After you enter the I-SMART url:
<https://www.ia-smart.org/system.aspx>
and click **A**dd you will see ia-smart.org
here.

Click 'Close' and then login to I-SMART again.